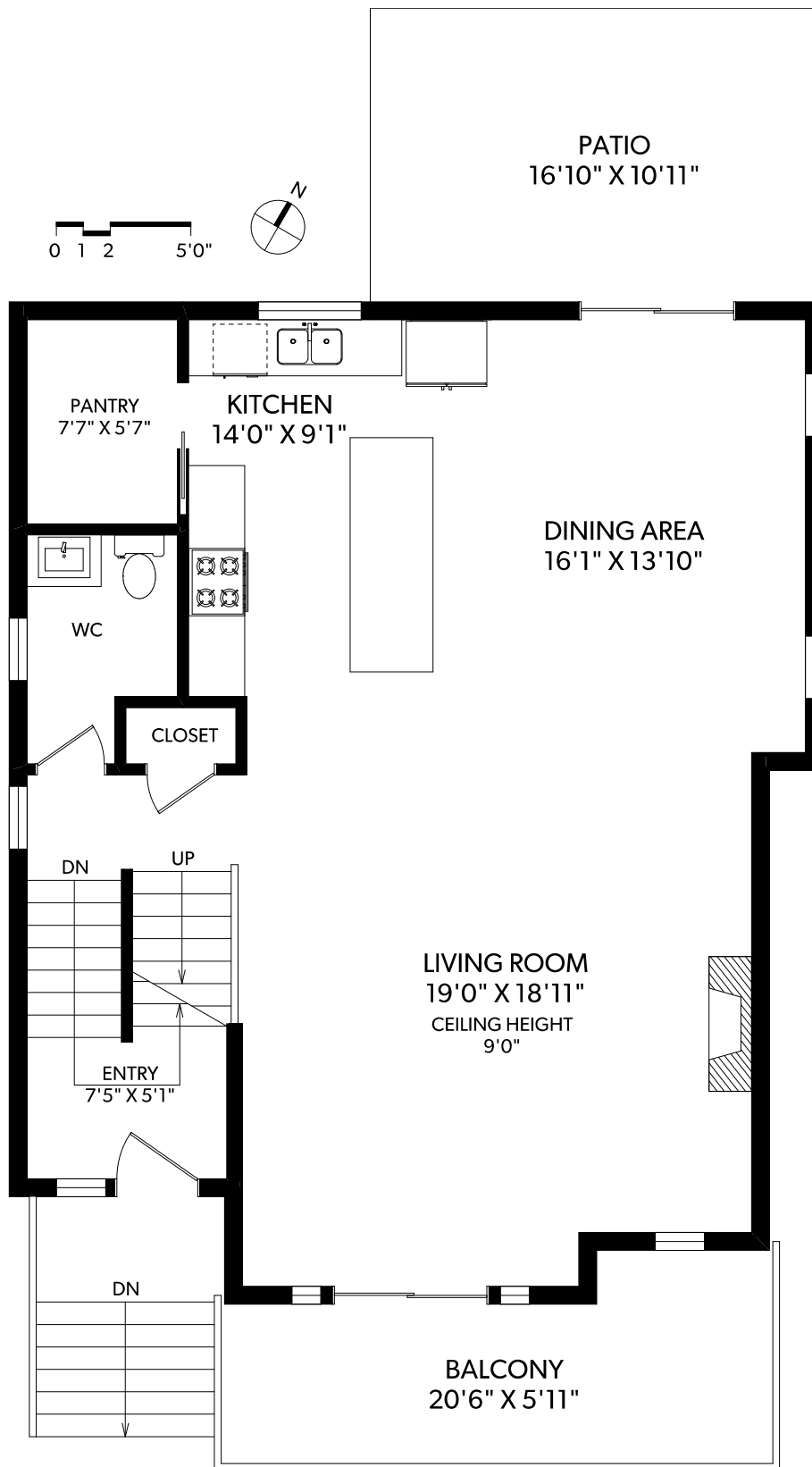


MAIN FLOOR

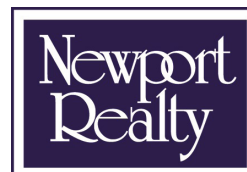


| FLOOR | FINISHED | UNFINISHED | TOTAL | OTHER AREAS |
|-------|----------|------------|-------|-------------|
| MAIN | 1042 | 0 | 1042 | GARAGE 395 |
| UPPER | 1015 | 0 | 1015 | PATIOS 307 |
| LOWER | 689 | 0 | 689 | BALCONY 143 |
| TOTAL | 2746 | 0 | 2746 | |

REAL FOTO **464 REGENCY PLACE**
 DOCUMENT PREPARED FOR THE EXCLUSIVE USE OF
IAN BROWN*

250-388-6998
 ORDERS@REALFOTO.CA

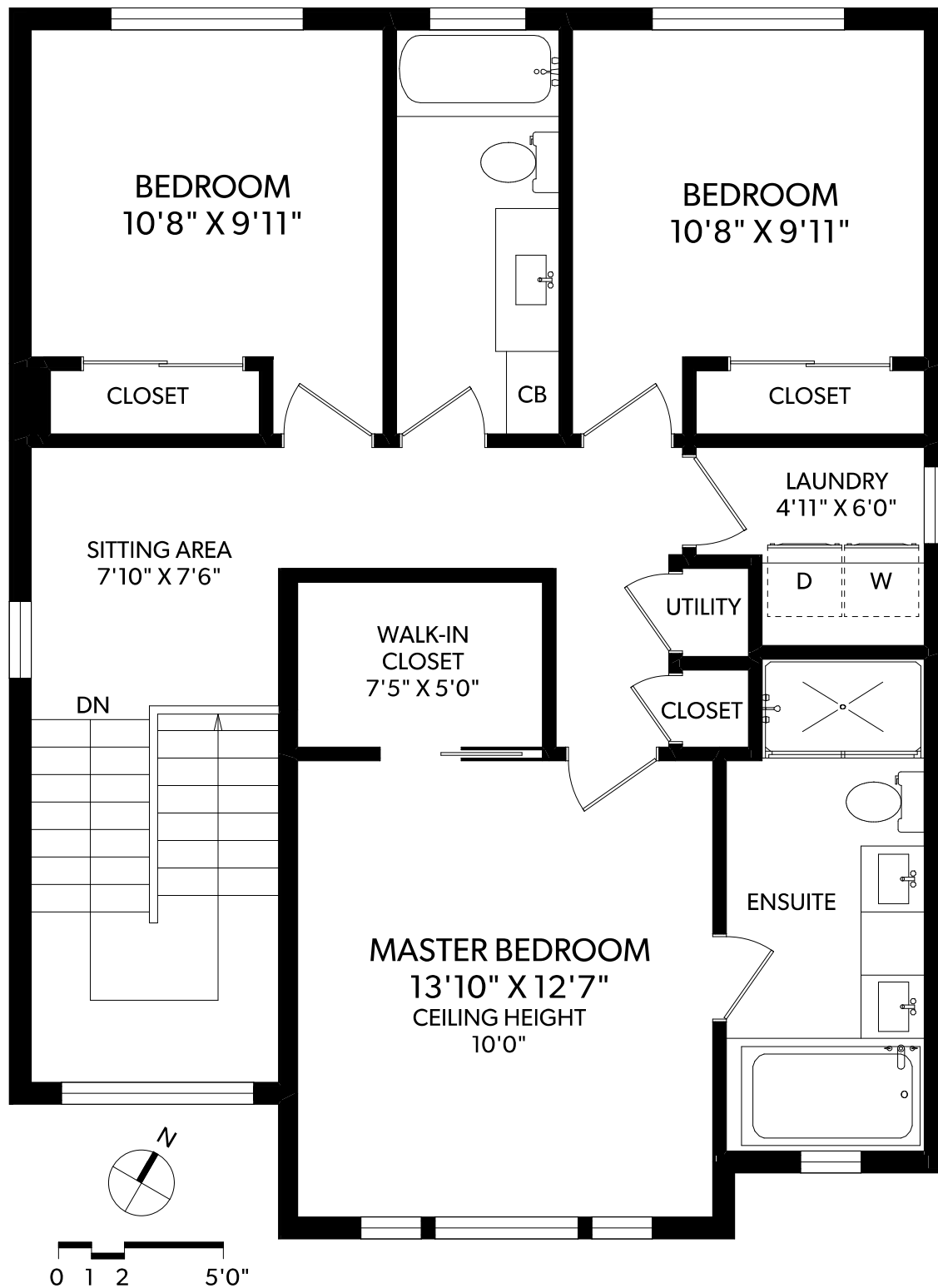
*PERSONAL REAL ESTATE CORPORATION
 MEASURED 10/30/2017 BY CLAY OVINGE



CHRISTIE'S
 INTERNATIONAL REAL ESTATE

All information furnished regarding this property is from sources deemed reliable but no warranty or representation is made to the accuracy thereof.

UPPER FLOOR



0 1 2 5'0"

| FLOOR | FINISHED | UNFINISHED | TOTAL | OTHER AREAS |
|--------------|-------------|------------|-------------|-------------|
| MAIN | 1042 | 0 | 1042 | GARAGE 395 |
| UPPER | 1015 | 0 | 1015 | PATIOS 307 |
| LOWER | 689 | 0 | 689 | BALCONY 143 |
| TOTAL | 2746 | 0 | 2746 | |



464 REGENCY PLACE

DOCUMENT PREPARED FOR THE EXCLUSIVE USE OF

IAN BROWN*

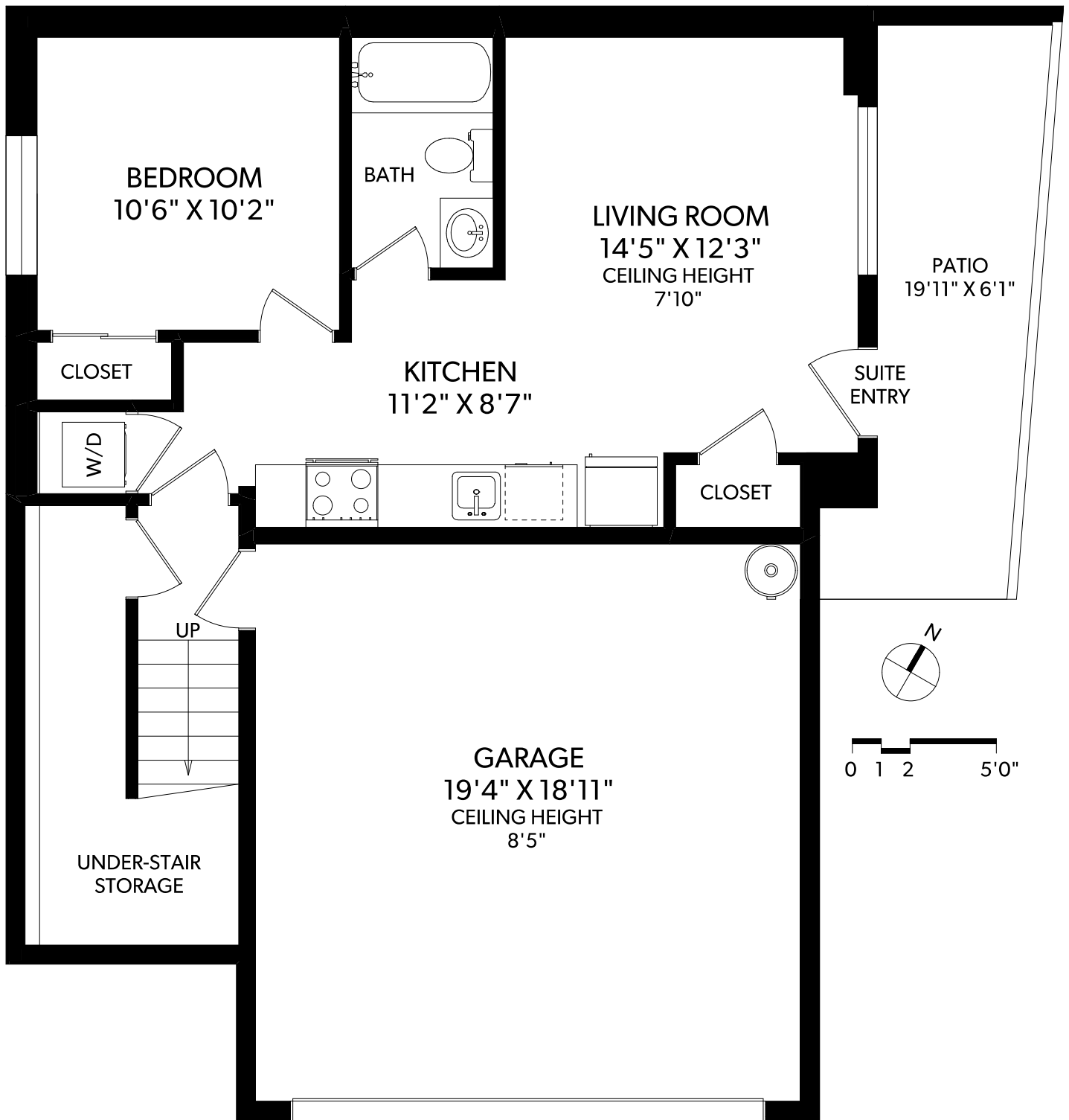
250-388-6998
ORDERS@REALFOTO.CA

*PERSONAL REAL ESTATE CORPORATION
MEASURED 10/30/2017 BY CLAY OVINGE



CHRISTIE'S
INTERNATIONAL REAL ESTATE

LOWER FLOOR



| FLOOR | FINISHED | UNFINISHED | TOTAL | OTHER AREAS |
|--------------|-------------|------------|-------------|-------------|
| MAIN | 1042 | 0 | 1042 | GARAGE 395 |
| UPPER | 1015 | 0 | 1015 | PATIOS 307 |
| LOWER | 689 | 0 | 689 | BALCONY 143 |
| TOTAL | 2746 | 0 | 2746 | |



464 REGENCY PLACE

DOCUMENT PREPARED FOR THE EXCLUSIVE USE OF

IAN BROWN*

250-388-6998
ORDERS@REALFOTO.CA

*PERSONAL REAL ESTATE CORPORATION
MEASURED 10/30/2017 BY CLAY OVINGE



CHRISTIE'S
INTERNATIONAL REAL ESTATE

All information furnished regarding this property is from sources deemed reliable but no warranty or representation is made to the accuracy thereof.