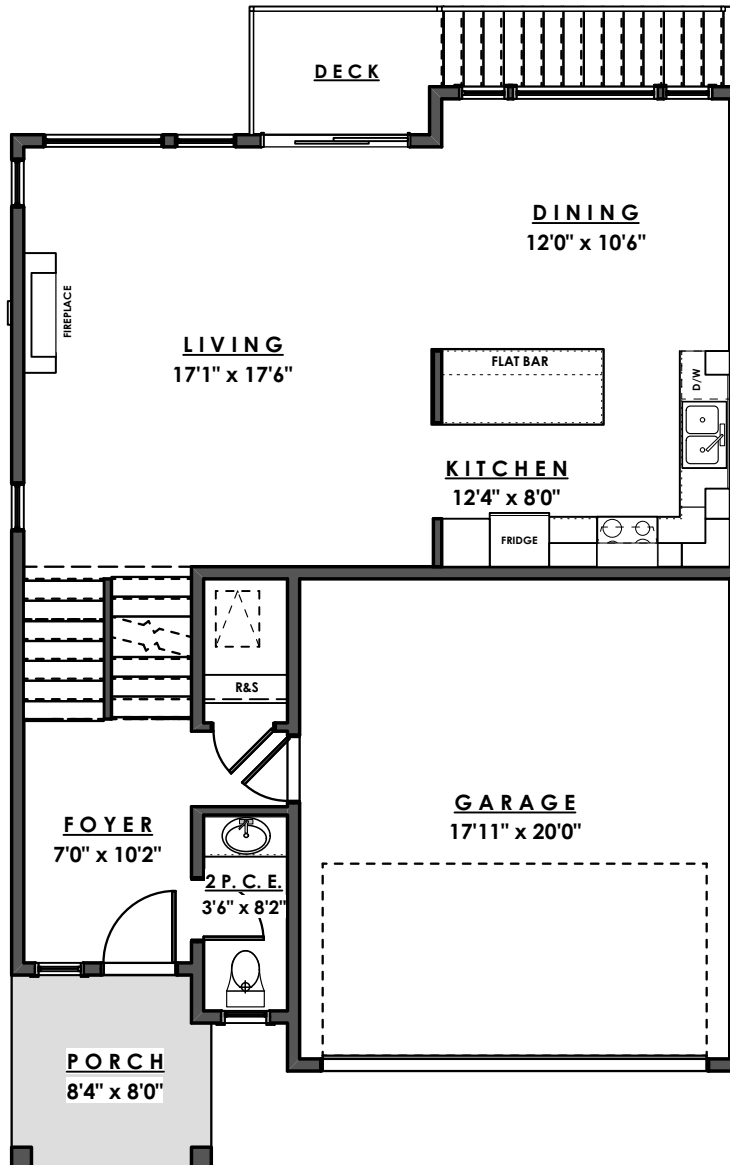


ROYAL BAY DRIVE



PARKSIDE
AT ROYAL BAY



MAIN FLOOR - 777 sq.ft.

GARAGE - 397 sq.ft.

Ian Brown
Personal Real Estate Corporation



Jonathan Gittins
Real Estate Consultant

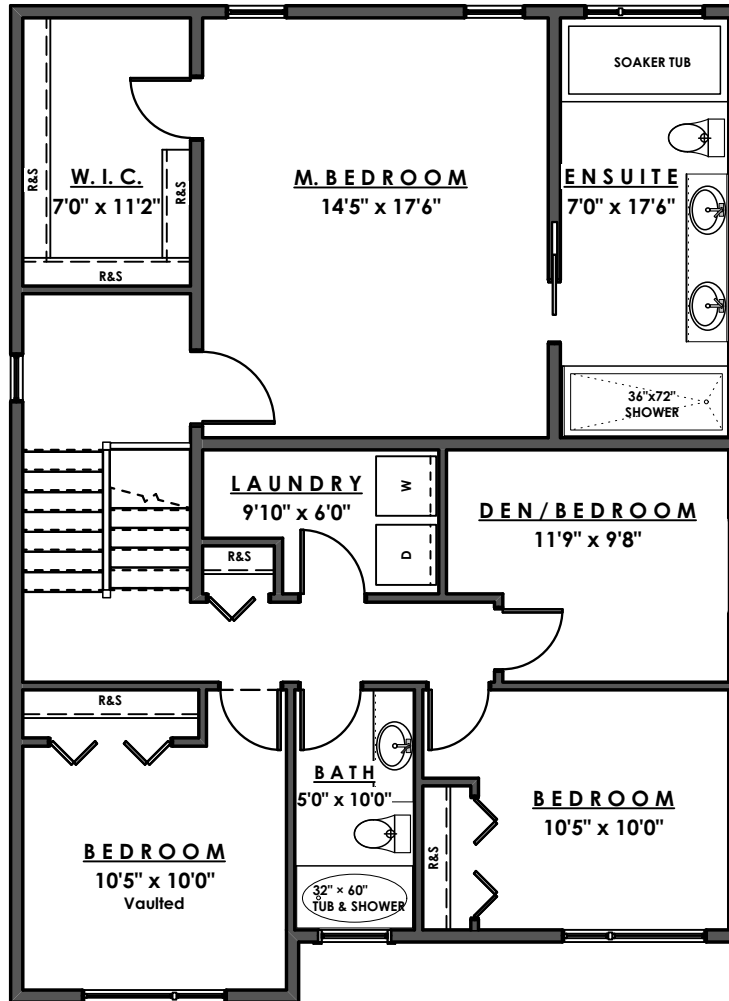
(250) 385 2033



ROYAL BAY DRIVE



PARKSIDE
AT ROYAL BAY



UPPER FLOOR - 1,216 sq.ft.

Ian Brown
Personal Real Estate Corporation

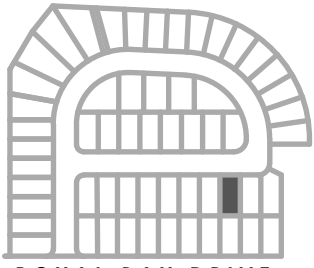


Jonathan Gittins
Real Estate Consultant

(250) 385 2033

Floorplans subject to change by the developer without notice

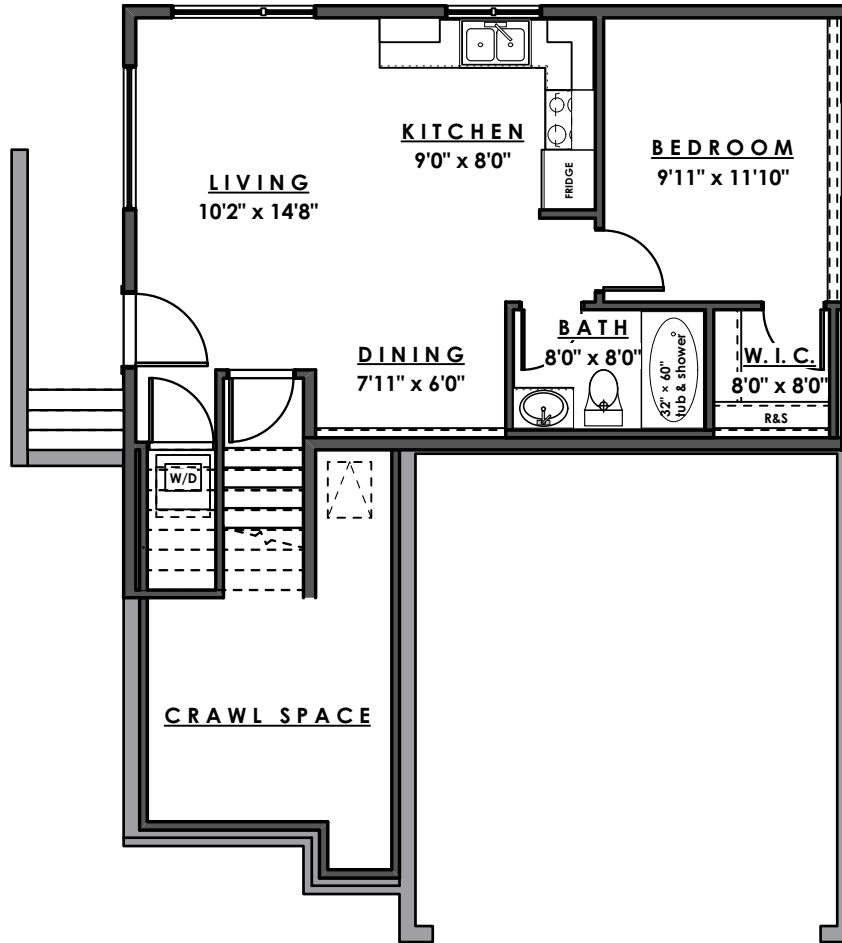
www.parb.ca



ROYAL BAY DRIVE



PARKSIDE
AT ROYAL BAY



LOWER FLOOR - 605 sq.ft.

Ian Brown
Personal Real Estate Corporation



Jonathan Gittins
Real Estate Consultant

(250) 385 2033

Floorplans subject to change by the developer without notice

www.parb.ca